

## Our CHALLENGE



We never forget our constant quest  
to balance the natural environment  
with comfortable lifestyles.

ADMER Section, Modifier Department,  
Polymers & Composite Materials Laboratory  
(Joined Mitsui Chemicals, Inc. in fiscal 2020)



Realizing sustainable procurement  
is the source of the value we  
deliver to customers.

Sustainable Feedstocks Division,  
Basic & Green Materials Business Sector  
(Joined Mitsui Chemicals, Inc. in fiscal 2018)



## Striving toward VISION 2030

The key to realizing the Mitsui Chemicals Group's VISION 2030 is the accumulation of the relentless endeavors of each and every employee. Just as we have done so far, we will continue to take up challenges to transform society with the power of chemistry.



We will create a network of trust  
by swiftly responding  
to customer requests.

Manager, Elastomers Materials Section,  
Functional Polymeric Materials Department,  
Nagoya Branch  
(Joined Mitsui Chemicals, Inc. in fiscal 2004)



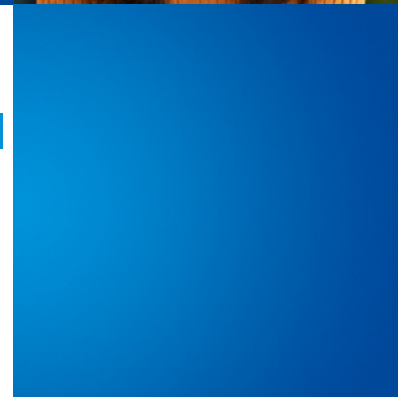
We will help build a sustainable  
future by pioneering  
the development of  
new businesses without being  
bound by conventional thinking.

Phenols Division,  
Basic & Green Materials Business Sector  
(Joined Mitsui Chemicals, Inc. in fiscal 2021)



We aim to be a world-leading team  
whose members feel the responsibility  
and fulfillment that comes with  
providing global products.

Pellicle Team Leader,  
Optical & Packaging Materials Department,  
Semiconductor & Optical Materials Division,  
ICT Solutions Business Sector  
(Joined Mitsui Chemicals, Inc. in fiscal 2017)



To realize stable production and  
safe operations as the foundation of  
our business, we will not overlook  
even small anomalies.

Elastomer Section-1,  
Manufacturing Department-2,  
1TF Operator  
(Joined Mitsui Chemicals, Inc. in fiscal 2016)



About publication of Mitsui Chemicals Report 2022

## Achieving continuous growth in corporate value through a positive cycle of dialogue and feedback

The Mitsui Chemicals Group has a long history of addressing social challenges, and in 2021 we formulated our long-term business plan, VISION 2030, which outlines a range of strategies including a transformation of our business portfolio. The Mitsui Chemicals Report 2022 contains a review of our performance in fiscal 2021 and our past business plans. It also provides an in-depth look at the business and sustainability strategies we will pursue under our new structure and direction, as well as the human resources strategies and corporate governance approaches that will form the foundation of these efforts, with an emphasis on how we are integrating financial and non-financial perspectives in our management—a key focus of our current management strategy. We hope that this report will help our stakeholders better understand how the Group is working to create value.

In preparing and editing this report, we have drawn on the International Integrated Reporting Framework issued by the Value Reporting Foundation (VRF) and the Ministry of Economy, Trade and Industry's Guidance for Collaborative Value Creation. The process involved cooperation among the Corporate Communications Division and other divisions across the Group. I have confirmed that the process of preparing the report was appropriate and that the content is valid.

We intend to use this report as an opportunity to engage in dialogue with our stakeholders, and we welcome your candid feedback on our activities. We will work to continuously increase our corporate value by reflecting the results of this dialogue in the Group's strategies going forward. I hope that you will provide us with your continued support and feedback.

**HASHIMOTO Osamu**  
Representative Director, President & CEO