



3. Name Changes of Group Companies after Reorganization

Subject to the completion of necessary official procedures, the names of each company will be changed as follows.

① **Mitsui Chemicals Agro, Inc. (as of March 31, 2023)**

To become: Mitsui Chemicals Crop & Life Solutions, Inc.

② **Utsunomiya Chemical Industry Co., Ltd. (as of April 1, 2023)**

To become: MC Crop & Life Manufacturing Co., Ltd.

③ **MM Agro Korea Co., Ltd. (on and after April 1, 2023)**

To become: Mitsui Chemicals Crop & Life Solutions Korea Co., Ltd.

④ **MC Ryokka Co., Ltd. (Unchanged)**

4. Organization Structure and Name Changes in Mitsui Chemicals Agro

(1) Newly Organized "Life Solutions Business Division"

To develop non-crop business into a second earnings pillar, we will newly organize the "Life Solutions Business Div." through the reorganization of the PPM Sales Dept. and PPM Marketing Group of the International Business Div.'s Marketing Dept., and will newly organize the following departments within the Life Solutions Business Division:

- Japan Life Solutions Sales Dept.
- Life Solutions Sales Dept.
- Life Solutions Sales Administration Dept.

After the reorganization, the Domestic Sales Div. will be renamed to "Japan Crop Solutions Business Div." and the International Business Div. will be renamed to "International Crop Solutions Business Div."

(2) Newly Organized "Human Resources Department"

To be an important driver of corporate transformation (CX) through the transformation and fostering of organizational culture, the promotion of talent management, developing global human resources including the hiring of foreigners, and the promotion of human resource strategies such as the penetration of diversity & inclusion (D&I), we recognize human resources as human capital and will newly organize a "Human Resources Dept."

(3) Newly Organized "New Business Development Department"

To promote business portfolio transformation (PX) through the development of new solution businesses that extend the value chain, we will newly organize a "New Business Development Dept." as a department-level organization under the Marketing Div. In addition, the "Department of Business Planning, India" will be abolished.

(4) Newly Organized "Biological Solutions Research Center"

To promote green transformation (GX) and to improve business continuity through PX by strengthening R&D and production technology for biological crop protection products, we will newly organize the "Biological Solutions Research Center" as a department-level organization under the Research and Development Div.

5. Outlook

As the impact of this reorganization on the financial performance of the Mitsui Chemicals Agro group will be minor, there is no change to the earnings forecast.

**6. Personnel Changes****(1) Board of Directors, Corporate Auditor**

Name	New Position	Current Position
OZAWA Satoshi	Representative Director, President & CEO	Representative Director, President & CEO
KAKIMOTO Takeshi	Board Director & Executive Vice President, CTO	Board Director & Executive Vice President, Board Director & Executive Vice President of MMAG
OGUNI Koichi	Board Director & Senior Managing Executive Officer, CCO	Board Director & Senior Managing Executive Officer, Division Head of R&D
MIYAI Toshiki	Board Director & Managing Executive Officer, CMO	Board Director & Managing Executive Officer, Division Head of Domestic Sales
SATO Tadahisa	Board Director & Managing Executive Officer, CSO, CFO, General Manager of Corporate Planning Dept.	General Manager of Corporate Planning Dept., Board Director of MMAG
HIRAKOSHI Itaru	Outside Director	Outside Director
FUNAKOSHI Hiromitsu	Non-executive Director	Non-executive Director
ZUSHI Akihide	Corporate Auditor	Corporate Auditor
TSUCHIYA Takeaki	Non-executive Corporate Auditor	Non-executive Corporate Auditor

- 1) CEO (Chief Executive Officer) Responsible for overall business execution of its group
- 2) CTO (Chief Technology Officer) Responsible for overall R&D and technology development of its group
- 3) CCO (Chief Commercial Officer) Responsible for overall sales and commercial activities of its group
- 4) CMO (Chief Marketing Officer) Responsible for overall marketing and products management of its group
- 5) CSO (Chief Strategy Officer) Responsible for overall strategy planning and execution, and administration of its group
- 6) CFO (Chief Financial Officer) Responsible for overall finance and accounting of its group



MITSUI CHEMICALS AGRO, INC.

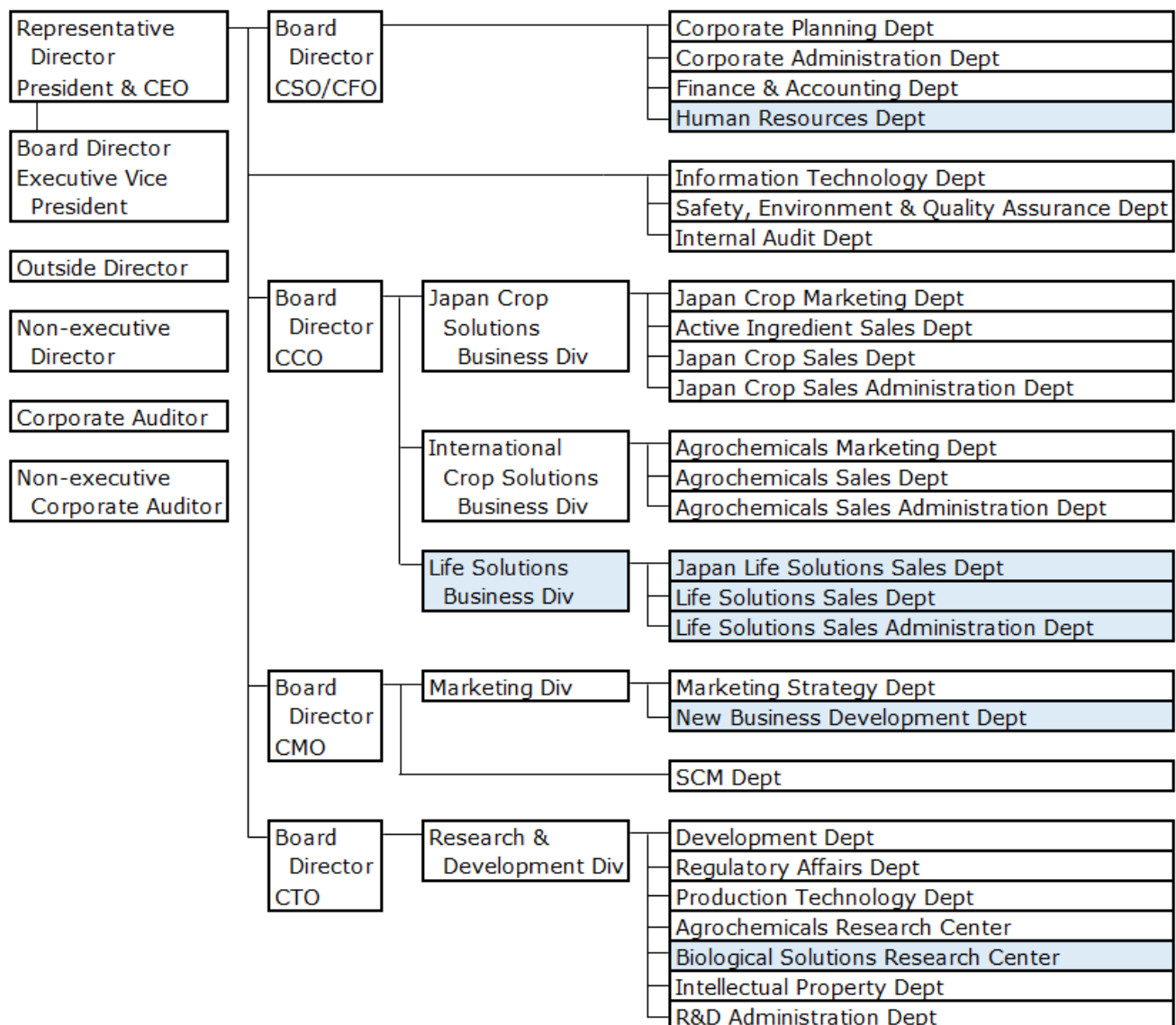
Nihonbashi Dia Building, 1-19-1, Nihonbashi, Chuo-ku, Tokyo 103-0027 JAPAN

References:

Corporate Overview of Mitsui Chemicals Crop & Life Solutions, Inc.

- (1) Company Name Mitsui Chemicals Crop & Life Solutions, Inc.
- (2) Head Office Nihonbashi Dia Building, 1-19-1 Nihonbashi, Chuo-ku, Tokyo 103-0027, Japan
- (3) Representative President & CEO, OZAWA Satoshi
- (4) Business Description Research, development, manufacture, sale, and import and export of agricultural chemicals and fertilizers for crop protection use
Manufacture and sale of insecticides for non-agricultural use
Environmental management of building materials, including insect control, termite control, and moisture prevention
- (5) Paid-in Capital 350 million yen
- (6) Founded April 1, 2003
- (7) Shareholders Mitsui Chemicals, Inc. 100%
- (8) Employees About 850 (Consolidated)

Organization of Mitsui Chemicals Crop & Life Solutions, Inc. (As of April 1, 2023)





MITSUI CHEMICALS AGRO, INC.

Nihonbashi Dia Building, 1-19-1, Nihonbashi, Chuo-ku, Tokyo 103-0027 JAPAN

Corporate Overview of MC Crop & Life Manufacturing Co., Ltd.

- | | |
|---------------------|---|
| (1) Company Name | MC Crop & Life Manufacturing Co., Ltd. |
| (2) Head Office | 1215 Iwazomachi, Utsunomiya-shi, Tochigi, Japan |
| (3) Representative | President, FUKUNAGA Yuji |
| (4) Business | Manufacture of agricultural chemicals and fertilizers |
| Description | Manufacture of insecticides for non-agricultural use |
| (5) Paid-in Capital | 20 million yen |
| (6) Founded | November 22, 1951 |
| (7) Shareholders | Mitsui Chemicals Crop & Life Solutions, Inc. 100% |
| (8) Factories | Formulations: Funaoka (Miyagi), Utsunomiya (Tochigi),
Shinshiro (Aichi), Tosu (Saga) |
| | Active Ingredients: Kitakami (Iwate) |
| (9) Employees | About 200 |