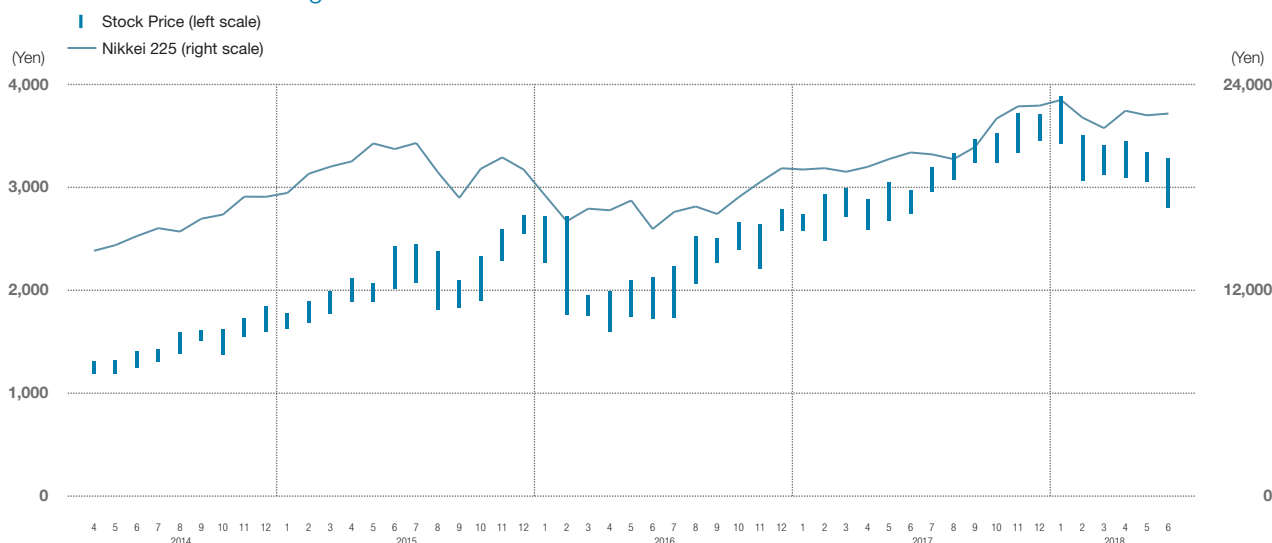


Stock Information

Common Stock Price Range



On October 1, 2017, Mitsui Chemicals conducted a 5-to-1 share consolidation. Stock prices have been recalculated based on this share consolidation.

Major Shareholders

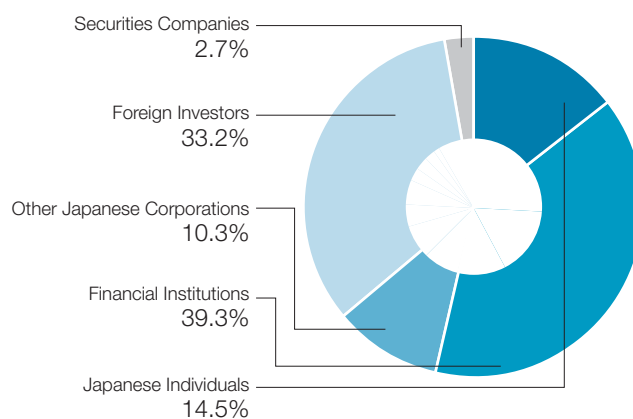
(As of March 31, 2018)

Major Shareholders	Number of shares held (Thousands)	Percentage of shares held (%)
Japan Trustee Services Bank, Ltd. (Trust account)	15,030	7.56
The Master Trust Bank of Japan, Ltd. (Trust account)	13,488	6.78
Japan Trustee Services Bank, Ltd. (Trust account 4)	4,543	2.28
Toray Industries, Inc.	4,485	2.25
Japan Trustee Services Bank, Ltd. (Trust account 5)	3,638	1.83
Sumitomo Mitsui Banking Corporation	3,485	1.75
Mitsui & Co., Ltd.	3,474	1.74
Japan Trustee Services Bank, Ltd. (Sumitomo Mitsui Trust Bank, Limited Re-trust account, Mitsui & Co., Ltd. Pension trust account)	3,474	1.74
STATE STREET BANK WEST CLIENT – TREATY 505234	3,405	1.71
Japan Trustee Services Bank, Ltd. (Trust account 7)	3,212	1.61

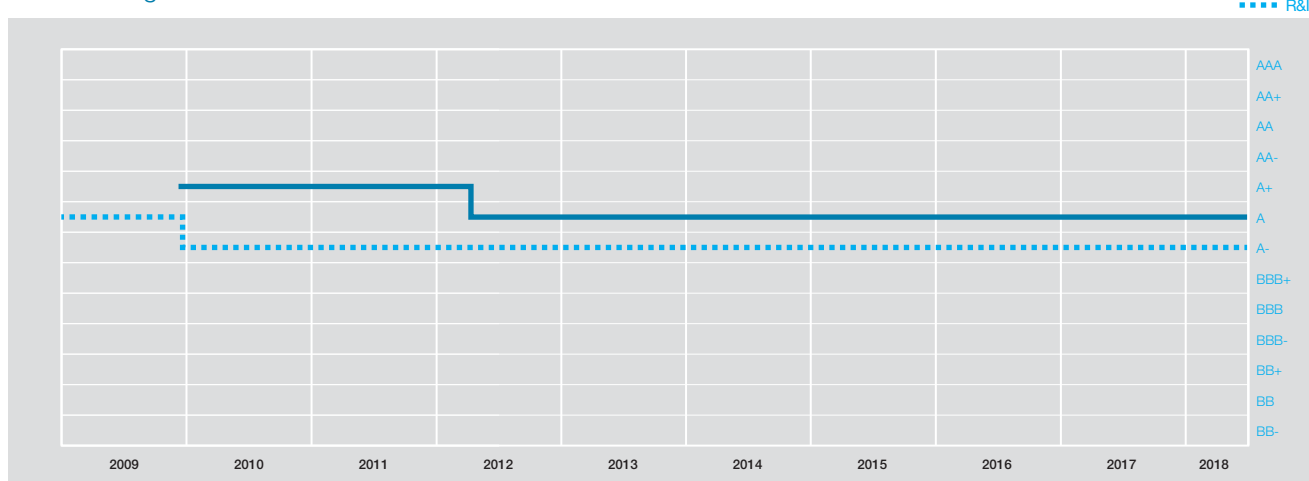
Note: The company's holdings of treasury stock (5,766,674 shares) are not including in the above figures.

Composition of Shareholders

(As of March 31, 2018)



Credit Ratings



JCR: Japan Credit Rating Agency, Ltd.
R&I: Rating and Investment Information, Inc.